

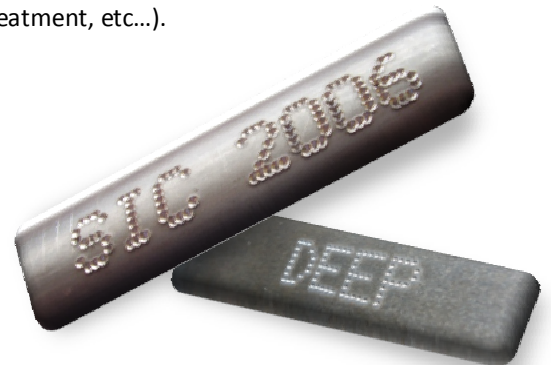
i111sd / e9D / i111d

Deep Marking Stations

Introduction

Part traceability is today a real part of the industrial organization of manufacturing companies. In the past, the heavy industry didn't need to identify items like steel beams or pipes used for the creation of the final component. But today, more and more companies want to identify all items even before specific treatment (paint, galvanization, chemical treatment, etc...).

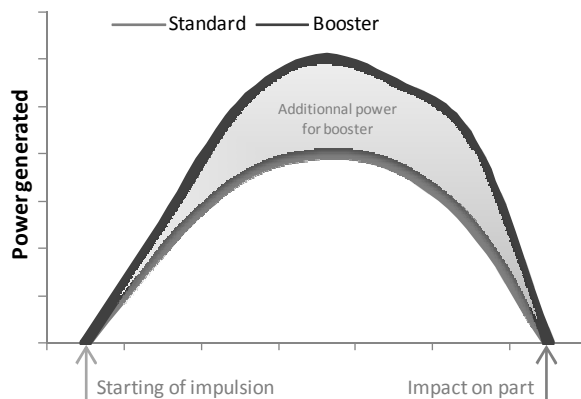
Due to the operations realized after marking, marking needs have completely changed and the main criterion is the depth of the marking! To keep a good readability after treatment, the marking should be much deeper than marking realized with a standard electromagnetic or pneumatic marking system which can only reach 0,3 – 0,4mm deep.



Linked to this new need of depth, SIC Marking developed a huge range of products which permit to reach a deeper depth (up to 0,9mm) with a specific technology adapted to electromagnetic or pneumatic standard systems.

A new technology

Based on its experience, SIC Marking that the energy is the main parameter to generate depth. In this way, we designed for the both kind of power we used, a global "booster" system which allows concentrating the energy (pneumatic or electromagnetic)!



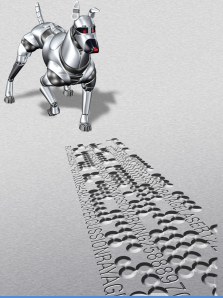
With smarter and quicker elements but by using our standard mechanism, we are able to generate a more powerful marking which permit to obtain much deeper marking.

In order to reach your needs which evaluate continually, SIC Marking are still developing new unit to fit perfectly with you expectations and to be able to provide you the best solution for your traceability applications.



SIC Marking
13, route de Limonest
Zac de la Braille
69380 Lissieu – France
Tél : +33 (0)4 72 54 80 00
Fax : +33 (0)4 78 47 39 40
www.sic-marking.com
info@sic-marking.com






Concentrate technology


Based on old experience & skills, SIC Marking adapted the **“power booster system”** to a majority of their products in order to reach the deep requirements of heavy industry. This system was adapted on 3 basic product of SIC Marking dedicated to the heavy industry.

E9D-p62 or e9D-p122: Mobility and Simplicity

Compatible with electromagnetic system, the **“power booster system”** was added to our e9 electronic board to generate a more powerful signal for the solenoid. This affects directly the power of the pin and generates a deep marking.



“Power booster system”
Directly integrated in e9 controller



Ø40mm solenoid
For more powerful impacts



With the possibility of battery option, the system is fully autonomous. Ideal to mark big and heavy part, the system is perfectly adapted to an external using in hard environment.

E8-i111d: Smart and Polyvalent

Combine with a pneumatic **“power booster system”**, the machine i111d can generate deep dot marking with pneumatic power supply. Completely associated to the machine, the unit looks like a standard machine of SIC Marking which can be driven by our e8 controller.

Designed with high robust mechanism, the unit could be directly integrated in an industrial system or production line and could resist to environment composed by oil and dust!



Bellows
To avoid dust inside



Ø40mm piston
High effort applied

E8-i111sd: Quality and Performances

Reinforced
Stronger mechanism




Deep groove
Up to 0,4mm

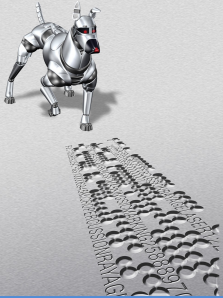
Also compatible with the scribing technology, the pneumatic **“power booster system”** can be used with the standard i111s to generate deep scribing marking when customers want to mark deeply with a high quality of characters shapes. Driven by our e8 controller, the machine conserves the advantages of the i111d but with a better shape of the mark.

Even if the system has the same design and the same robustness than i111d, the system could be used as a standalone system with several accessories.



SIC Marking
13, route de Limonest
Zac de la Braille
69380 Lissieu – France
Tél : +33 (0)4 72 54 80 00
Fax : +33 (0)4 78 47 39 40
www.sic-marking.com
info@sic-marking.com





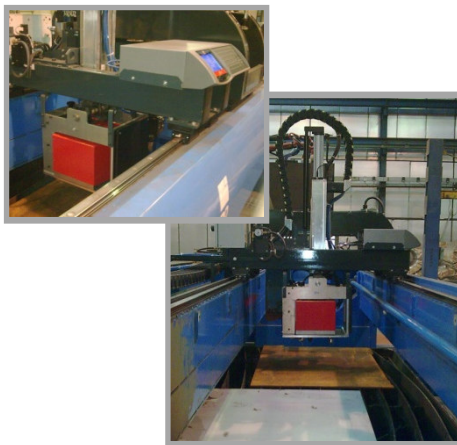
► Few examples of applications

Deep marking on gas pipes

For this case, the customer already have a gas station installed but need to mark and identify each item of the station. For all maintenance acts, the new parts should be marked too after their installation. Due to the specific process of marking, the customer needed a full mobile system which allows preparing marking file in advance! The unit e9D-p122 is the best solution. Associated to a cart and battery option, the customer is able to move wherever he wants and to prepare the marking file with the dedicated SIC FILE EDIT. Simple and compact, the system can be stored very easily up to the next operation.



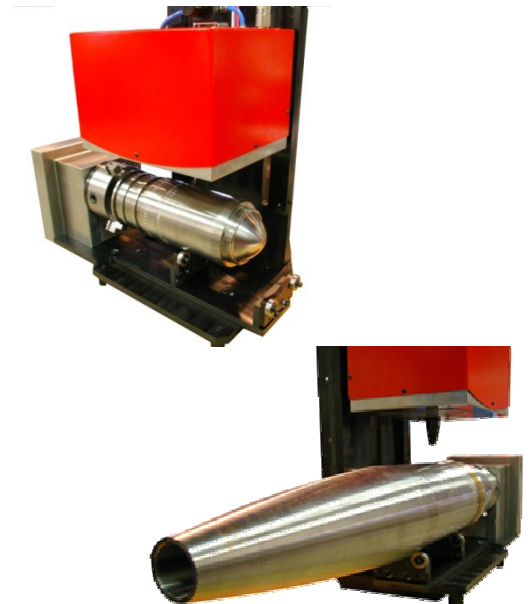
Water cutting system with identification



For a better identification of the steel plate for their customer, a distributor of steel plates directly integrates an i111d on a water cutting system. With this association, all steel plate are clearly identify before the cutting operation. The system avoids error during the handling of the steel plates because several plates (for different customers) are realized from one main plate in one cycle. As the marking machine identifies the part before cutting, there are no risks of exchange between plates. Even if the customer treats parts after cutting operation, the identification will be still visible due to the high depth of the mark.

Shell marking station

For several months, defense standard requests more and more security for shell identification and traceability. Or, due to the new treatment and specific texture applied on metallic parts of a shell, manufacturer has more and more difficulties to keep the identification easily readable. That's why a deeper marking is needed today and that's why SIC Marking designed a complete deep scribing station in order to mark shell with a high depth and a good quality of marking. Associated to a D drive and a reinforced column, the scribing station permit to mark deeply in the hard material of the shell and then generate a perfect readable marking! Due to the high quality of the scribing marking and depth, the identification of the shell is simple even if several specific texture are applied on the part after marking.



SIC Marking
13, route de Limonest
Zac de la Braille
69380 Lissieu – France
Tél : +33 (0)4 72 54 80 00
Fax : +33 (0)4 78 47 39 40
www.sic-marking.com
info@sic-marking.com

